

Images of Lookout Cottage, a.k.a. Holly Hill House, on engraved Avalon scene teaspoons

In the earliest years of the Catalina tourism, before a number of major manufacturing jewelers, either by commission, or on their own initiative, began mass producing souvenir spoons with special Catalina features, most Catalina souvenir spoons were just typical sterling flatware spoons whose bowls were engraved with simple inscriptions like "Catalina Island Cal.". Occasionally a much fancier Catalina souvenir teaspoon might have a hand engraved scene featuring a Catalina landmark or landscape applied to the bowl. The most common of these engraved scenes were views of Avalon Bay, Sugar Loaf Point and Sugar Loaf Rock. Regrettably, these artistic little gems were rapidly replaced over the course of the first decade of the 20th century by mass produced spoons featuring Avalon Bay and Sugar Loaf Rock scenes mechanically embossed on the bowls.

Not surprisingly some of the first embossed bowl designs, including those of Paye and Baker and Fessenden & Co. mimicked engraved scenes, but rapidly those "engraving-like" designs were replaced by designs with quite realistic views of Avalon Bay.

Engraved bowl



on Simmons and Paye – Indian figural

Embossed bowl – "engraving-like"



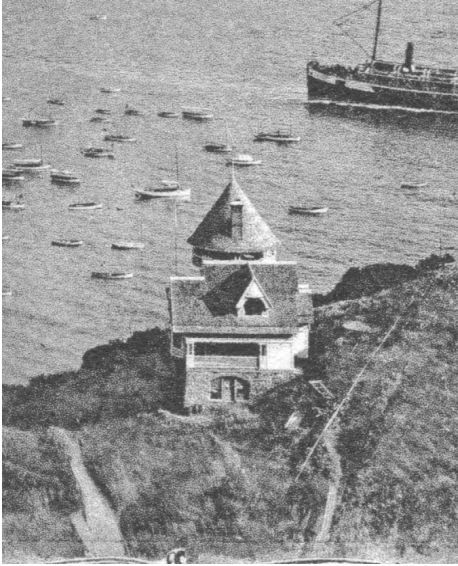
on Paye and Baker - #11002 – fish w/ "Tuna"

Some of the engraved Avalon Bay scenes were likely based on photographs of Avalon Bay similar to those shown in the postcards here on the Holly Hill House page. Other engraved Avalon Bay scenes present much more artful and impressionistic views of the harbor and landscape. All, however, contrast markedly with the majority of embossed bowl designs, which are clearly based on identifiable photographs and photographic postcards.

To indicate the variety and artistic license displayed among these engraved scenes, a sample of the renderings of Lookout Cottage, a.k.a. Holly Hill House, is presented below.

Renderings of Lookout Cottage, a.k.a. Holly Hill House, on engraved Avalon scene teaspoon bowls

Lookout Cottage, ca. 1902, view from southeast



View from south



On Gorham Versailles woman and cherub



On Simmons and Paye Indian figural



On Wallace Louvre



On J. Mayer & Bros – Tuna



Renderings of Lookout Cottage, a.k.a. Holly Hill House, on engraved Avalon scene teaspoon bowls

On Wallace Louvre



On Whiting Bead pattern



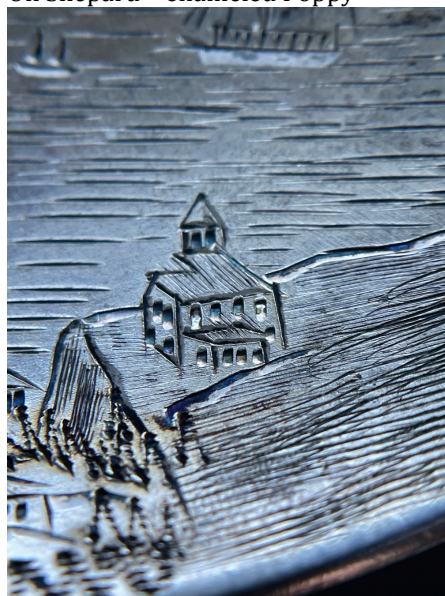
On Watson CA themes



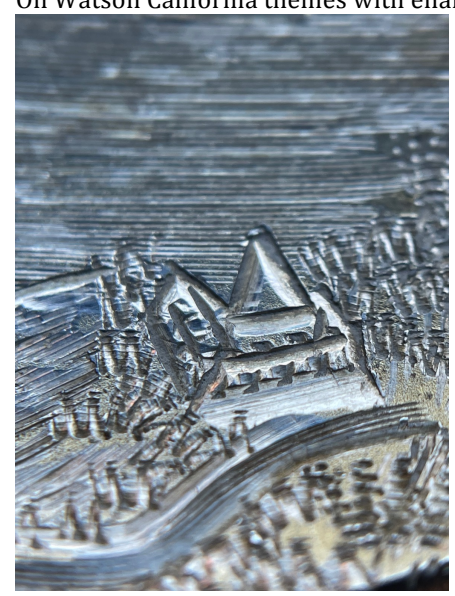
On Watson #337 – Maritime themes



On Shepard – enameled Poppy



On Watson California themes with enamel

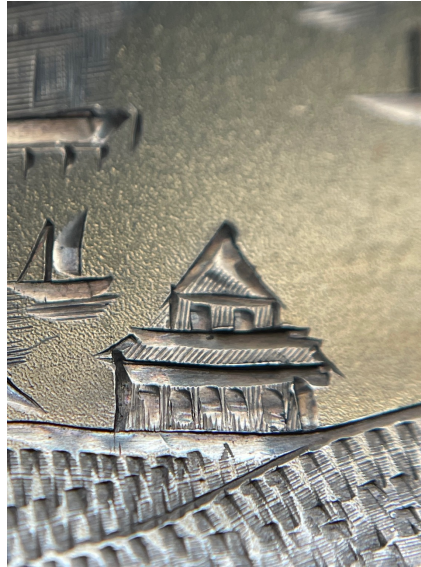


Renderings of Lookout Cottage, a.k.a. Holly Hill House, on engraved Avalon scene teaspoon bowls

On Gorham Cambridge



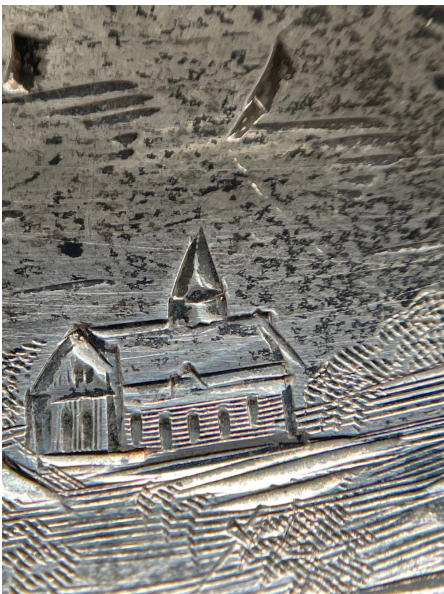
On E.L. Deacon – CA and seals



On Coddling Bros. and Heilborn - fish



On Watson #311 - fish



On Watson Orchid



On Watson #311 - fish



Renderings of Lookout Cottage, a.k.a. Holly Hill House, on engraved Avalon scene teaspoon bowls

On Watson #736 Tuna special



On Watson #253 coffee - mono 1907



On Wallace Rose pattern



On Watson #311 - fish



On Wallace - Sugar Loaf & fish mono 1912

